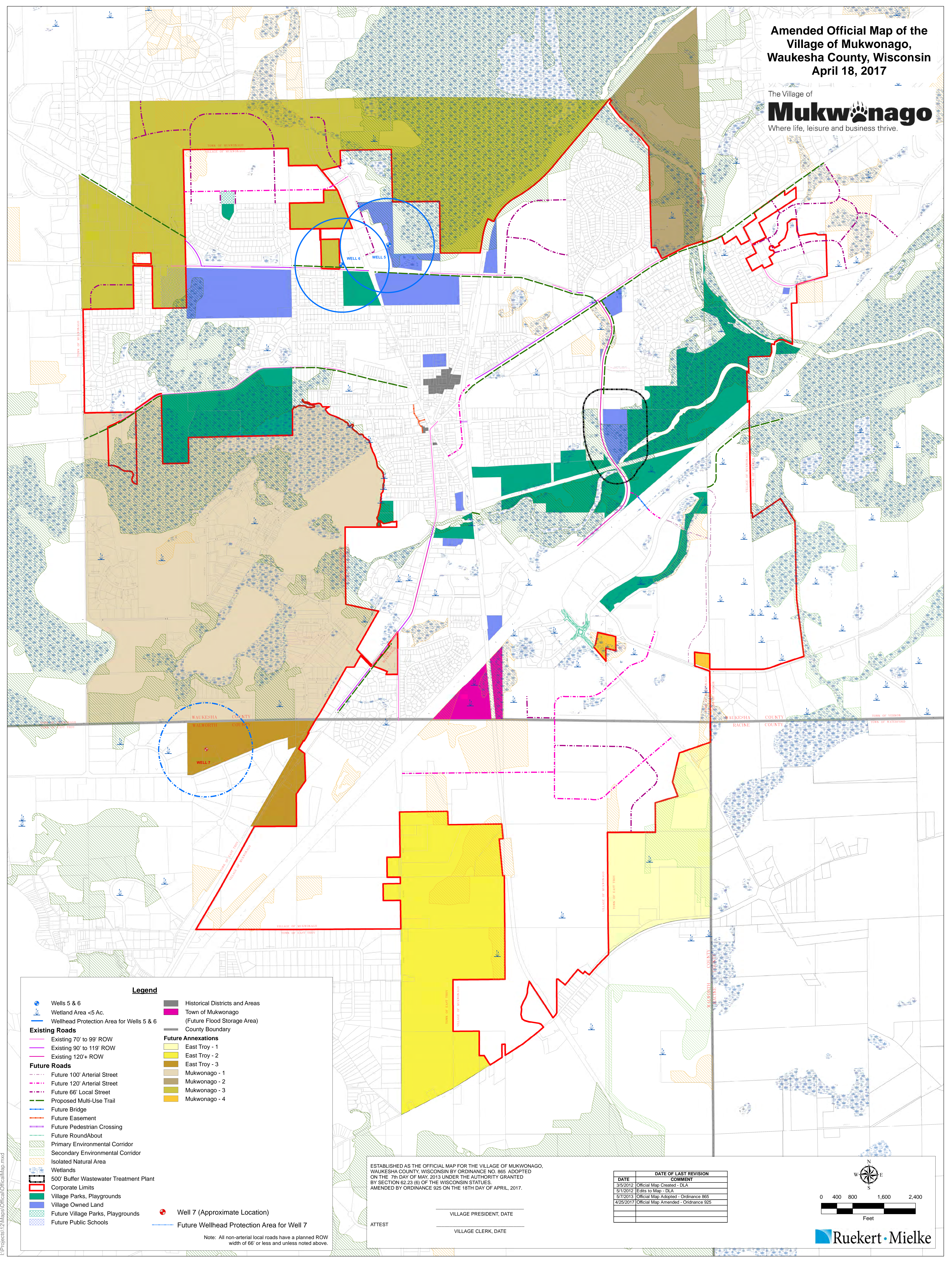


Amended Official Map of the  
Village of Mukwonago,  
Waukesha County, Wisconsin  
April 18, 2017



Legend

- Wells 5 & 6
- Wetland Area <5 Ac.
- Wellhead Protection Area for Wells 5 & 6
- Existing Roads**
  - Existing 70' to 99' ROW
  - Existing 90' to 119' ROW
  - Existing 120'+ ROW
- Future Roads**
  - Future 100' Arterial Street
  - Future 120' Arterial Street
  - Future 66' Local Street
  - Proposed Multi-Use Trail
  - Future Bridge
  - Future Easement
  - Future Pedestrian Crossing
  - Future RoundAbout
  - Primary Environmental Corridor
  - Secondary Environmental Corridor
  - Isolated Natural Area
  - Wetlands
  - 500' Buffer Wastewater Treatment Plant
  - Corporate Limits
  - Village Parks, Playgrounds
  - Village Owned Land
  - Future Village Parks, Playgrounds
  - Future Public Schools
- Historical Districts and Areas
- Town of Mukwonago (Future Flood Storage Area)
- County Boundary
- Future Annexations**
  - East Troy - 1
  - East Troy - 2
  - East Troy - 3
  - Mukwonago - 1
  - Mukwonago - 2
  - Mukwonago - 3
  - Mukwonago - 4
- Well 7 (Approximate Location)
- Future Wellhead Protection Area for Well 7

Note: All non-arterial local roads have a planned ROW width of 66' or less and unless noted above.

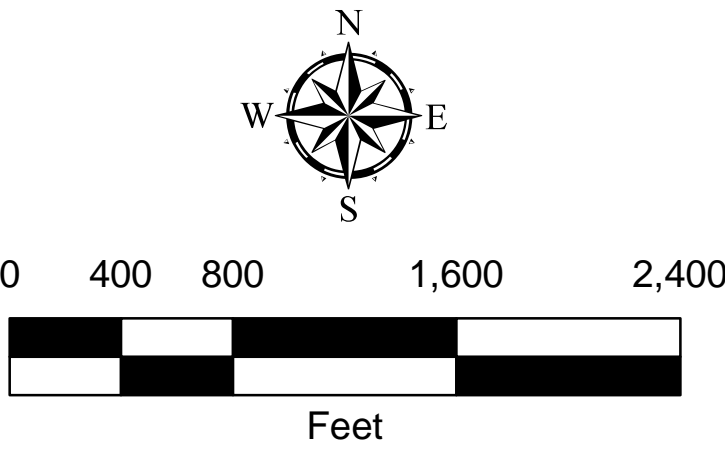
ESTABLISHED AS THE OFFICIAL MAP FOR THE VILLAGE OF MUKWONAGO, WAUKESHA COUNTY, WISCONSIN BY ORDINANCE NO. 865 ADOPTED ON THE 7th DAY OF MAY, 2013 UNDER THE AUTHORITY GRANTED BY SECTION 62.23 (6) OF THE WISCONSIN STATUTES. AMENDED BY ORDINANCE 925 ON THE 18TH DAY OF APRIL, 2017.

ATTEST

VILLAGE PRESIDENT, DATE

VILLAGE CLERK, DATE

DATE OF LAST REVISION	
DATE	COMMENT
3/6/2012	Official Map Created - DLA
5/1/2012	Edits to Map - DLA
6/7/2013	Official Map Adopted - Ordinance 865
4/25/2017	Official Map Amended - Ordinance 925



Ruekert • Mielke