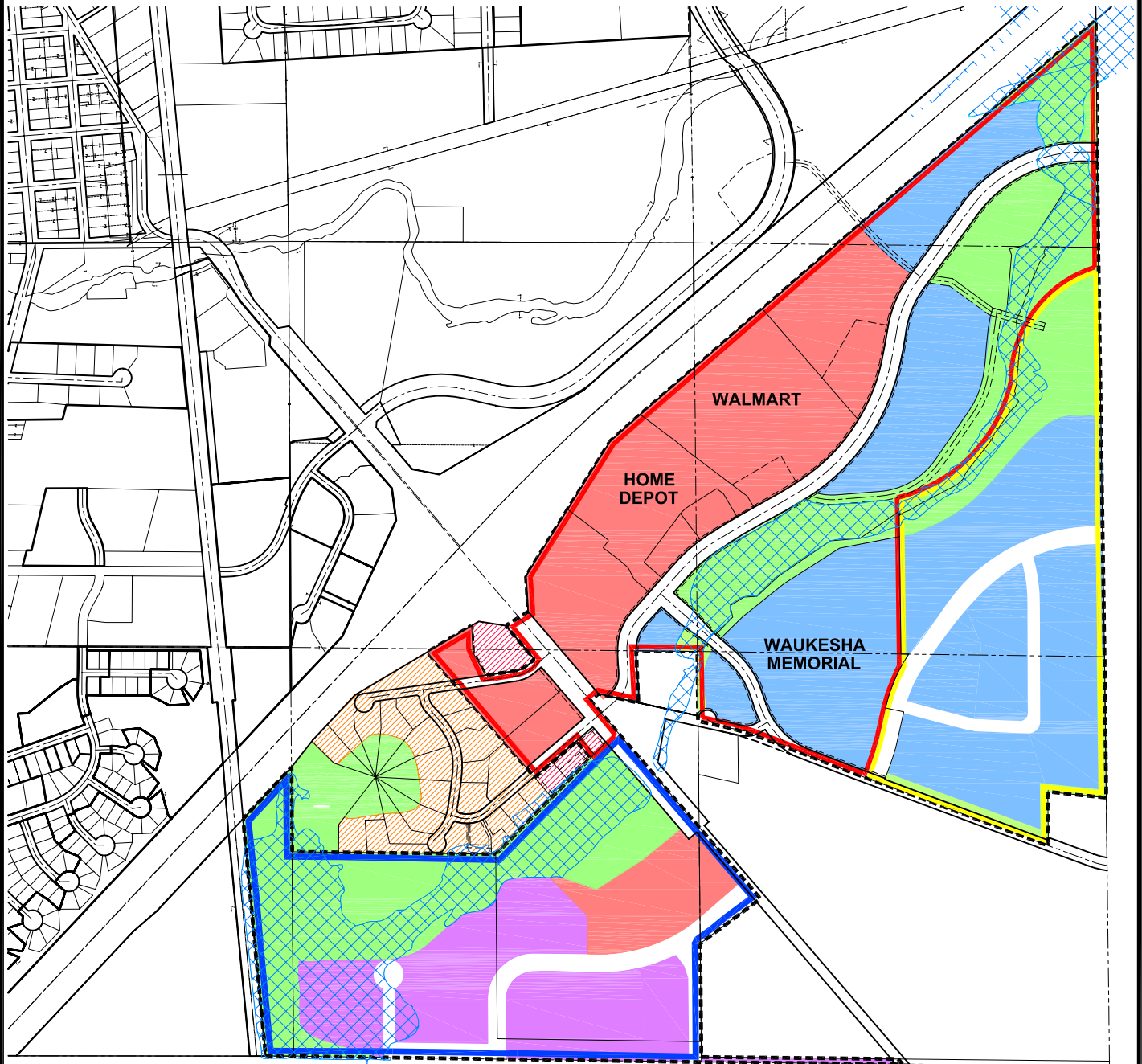


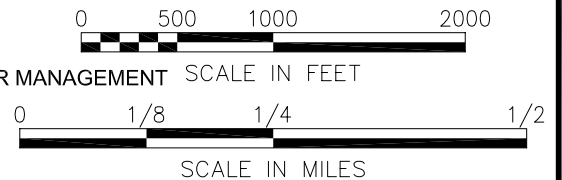
TID #3 EXISTING AND PROPOSED LAND USE VILLAGE OF MUKWONAGO WAUKESHA COUNTY, WISCONSIN

VILLAGE OF MUKWONAGO



LEGEND

- | | |
|------------------------|---|
| TID BOUNDARY | FLOODPLAIN |
| PHASE 1 | SHORELAND |
| PHASE 2 | LOW DENSITY MULTI-FAMILY
(UP TO 6 DWELLINGS/ACRE) |
| PHASE 3 | OPEN SPACE/CORRIDOR
PRESERVATION/STORMWATER MANAGEMENT |
| EXISTING SINGLE FAMILY | COMMERCIAL |
| EXISTING MULTI-FAMILY | CORPORATE BUSINESS |
| EXISTING COMMERCIAL | INDUSTRIAL |



Sep 03, 2009 12:29pm
G:\Land\1292082.dwg\ZeeX.LandUse2006fp.dwg Layout
IMAGES: G:\SHT\RMGraphic.jpg
XREFS: G:\Land\1292082.dwg\CdbMukTid3.dwg; G:\Land\1292082.dwg\row-save.dwg; G:\Land\1292082.dwg\floorplan.dwg