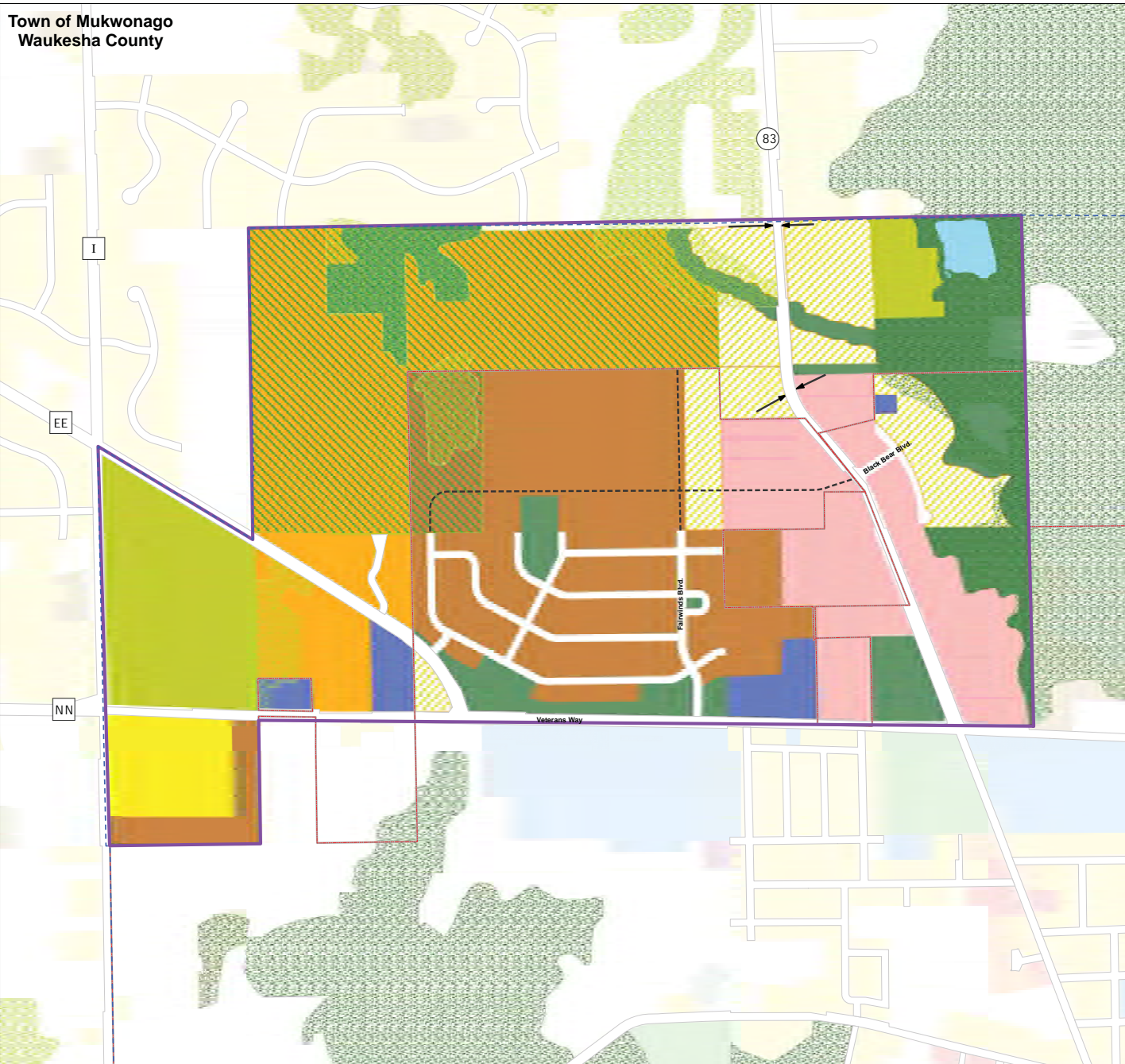


Map 4 - North Key Area
Recommended Land Use for 2035
Adopted November 29, 2016,
Ordinance No. 918

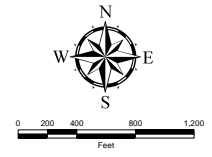
Village of Mukwonago
Waukesha County, Walworth County

Legend

-  Planning Area
-  Key Area
-  Ultimate Village Boundary
-  Proposed Collector Streets
-  Future STH 83 Access
-  Primary Environmental Corridor
-  Secondary Environmental Corridor
-  Isolated Natural Area
-  Agriculture / Large Lot Single Family - 37,500 Sq. Ft. ¹
-  Small Lot Single Family - 10,000-12,000 Sq. Ft. ¹
-  Medium Lot Single Family I - 25,000 Sq. Ft. ¹
-  Medium Lot Single Family II - 15,000 Sq. Ft. ¹
-  Historical Residential - 12,000 Sq. Ft. ¹
-  Conservation Subdivision Design Overlay
-  Executive Style Large Lot Single Family - 37,500 Sq. Ft. ¹
-  Low Density Multi-Family Residential - 5 Units / Ac. ²
-  Medium Density Multi-Family Residential - 10 Units / Ac. ²
-  High Density Multi-Family Residential - 15 Units / Ac. ²
-  Village Center / Downtown Overlay
-  Business Mixed Use Overlay
-  Low Intensity Commercial / Business
-  High Intensity Commercial / Business
-  Business Park
-  Industrial
-  Government and Institutional
-  Open Space / Recreational
-  Extractive Overlay
-  Municipal Divisions
-  Current Village Limits
-  County Line



NOTE: Please see text for details of each land use category.
1. Minimum lot size.
2. Maximum dwelling unit density/acre.



I:\Projects\12\Maps\LandUse\2035LU_KeyArea2016.mxd