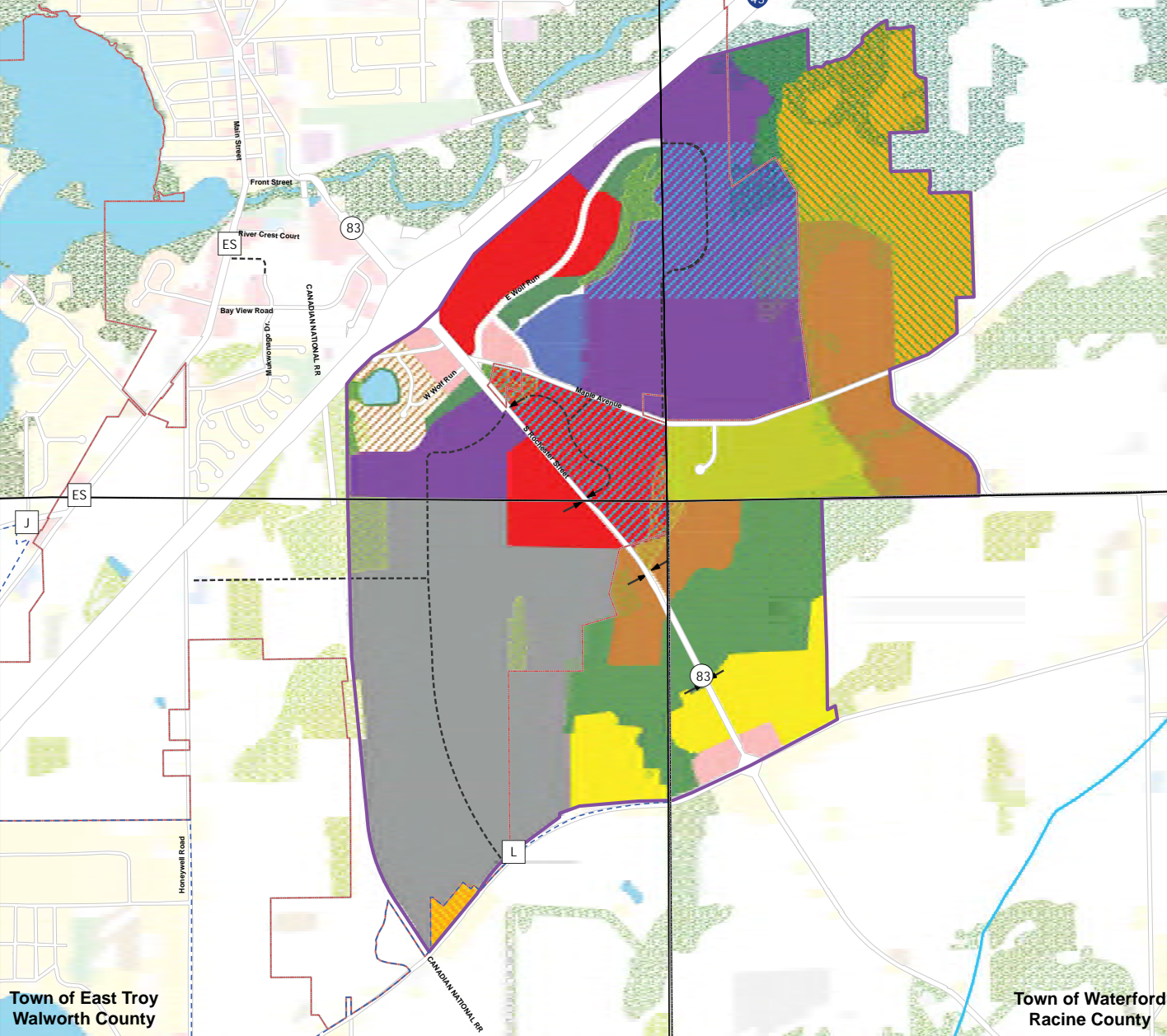


Town of Mukwonago
Waukesha County

Town of Vernon
Waukesha County

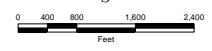


Map 6 - South / Southeast Key Area
Recommended Land Use for 2035
Adopted November 29, 2016,
Ordinance No. 918

Village of Mukwonago
 Waukesha County, Walworth County

Legend

- Planning Area
- Key Area
- Ultimate Village Boundary
- Proposed Collector Streets
- Future STH 83 Access
- Primary Environmental Corridor
- Secondary Environmental Corridor
- Isolated Natural Area
- Agriculture / Large Lot Single Family - 37,500 Sq. Ft. ¹
- Small Lot Single Family - 10,000-12,000 Sq. Ft. ¹
- Medium Lot Single Family I - 25,000 Sq. Ft. ¹
- Medium Lot Single Family II - 15,000 Sq. Ft. ¹
- Historical Residential - 12,000 Sq. Ft. ¹
- Conservation Subdivision Design Overlay
- Executive Style Large Lot Single Family - 37,500 Sq. Ft. ¹
- Low Density Multi-Family Residential - 5 Units / Ac. ²
- Medium Density Multi-Family Residential - 10 Units / Ac. ²
- High Density Multi-Family Residential - 15 Units / Ac. ²
- Village Center / Downtown Overlay
- Business Mixed Use Overlay
- Low Intensity Commercial / Business
- High Intensity Commercial / Business
- Business Park
- Industrial
- Government and Institutional
- Open Space / Recreational
- Extractive Overlay
- Municipal Divisions
- Current Village Limits
- County Line



NOTE: Please see text for details of each land use category.
 1. Minimum lot size.
 2. Maximum dwelling unit density/acre.

I:\Projects\12\Maps\LandUse\2035LU_KeyArea2016.mxd

Town of East Troy
Walworth County

Town of Waterford
Racine County

SOURCE: Ruckert/Mielke, SEWRPC

December 2016

